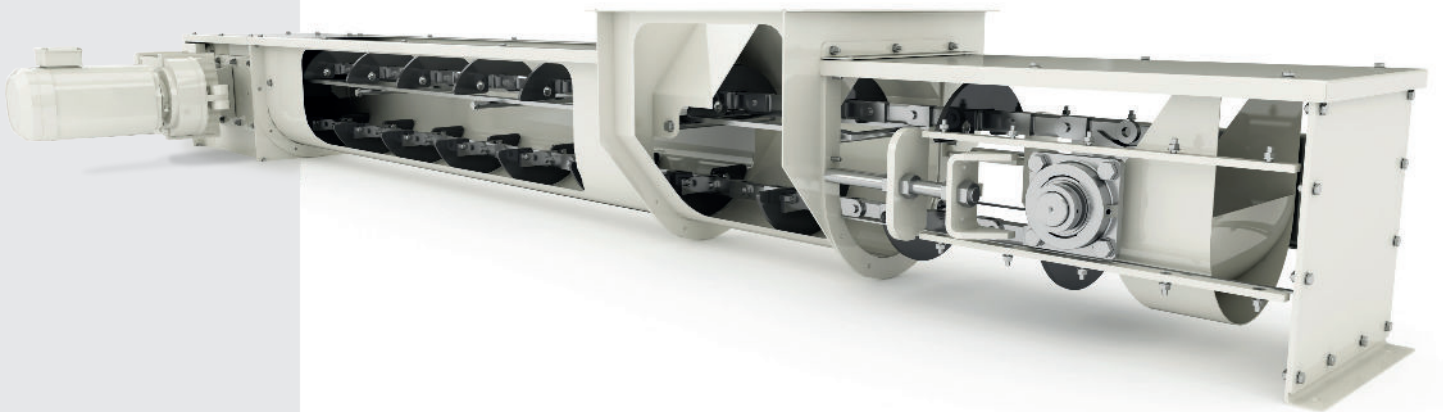






**OTTEVANGER**  
PROCESS SOLUTIONS


# Flight Conveyors

## Technical Datasheet



Geared  
drive units 

Product overflow  
detection is standard 

Guide strips for  
the flights 

# Flight Conveyors

Ottevanger flight conveyors are used for applications that have the most strict hygienic demands.

The flight conveyors are suitable for conveying practically all powders and granulates. Capacities range from 30 up to 400 m<sup>3</sup>/h. These conveyors are capable of inclined conveying up to an angle of 40°.

| Type | Capacity (m <sup>3</sup> /h) |
|------|------------------------------|
|      | 0,5 (m/s)                    |
| 200  | 40                           |
| 300  | 68                           |
| 400  | 130                          |
| 600  | 270                          |

## Features

- ✓ S235 steel trough, U-shaped, fully enclosed design
- ✓ Primer and paint finish
- ✓ Geared drive units
- ✓ Product overflow detection is standard
- ✓ Chain tensioner
- ✓ Guide strips for the flights
- ✓ HMPE flights

## Special executions

- ✓ Executed in AISI304
- ✓ Executed in galvanized S235 steel
- ✓ Double the amount of flights
- ✓ Drop bottom
- ✓ Speed sensor
- ✓ ATEX22 zoned drive-units
- ✓ Inclined installation up to 40° (depending on product)



For more information, visit our website.